



IMF STAFF POSITION NOTE

September 1, 2010
SPN/10/12

Default in Today's Advanced Economies: Unnecessary, Undesirable, and Unlikely

Carlo Cottarelli, Lorenzo Forni, Jan Gottschalk, and Paolo Mauro

INTERNATIONAL MONETARY FUND

Fiscal Affairs Department

Default in Today's Advanced Economies: Unnecessary, Undesirable, and Unlikely

Prepared by Carlo Cottarelli, Lorenzo Forni, Jan Gottschalk, and Paolo Mauro

September 1, 2010

DISCLAIMER: The views expressed herein are those of the author(s) and should not be attributed to the IMF, its Executive Board, or its management.

JEL Classification Numbers: F34, H60

Keywords: Fiscal adjustment, public debt

Authors' E-mail Addresses: ccottarelli@imf.org; lforni@imf.org;
jgottschalk@imf.org; pmauro@imf.org

CONTENTS

PAGE

Introduction.....	4
Arguments and Rebuttals.....	5
Conclusion.....	11
References.....	26

TABLES

1. Advanced Economies: The State of Public Finances and Debt-Stabilizing Primary Balances.....	16
2. Decomposition of Debt Dynamics, Advanced Economies and Default Episodes.....	17
3. Advanced Economies' Gross Financing Needs, 2010–2011.....	18
4. Nominal, Real Interest Rate, and Growth Differential.....	19
5. Episodes When Sovereign Bond Spreads Rose above 1,000 Basis Points, Emerging Economies.....	20
6. Debt Structure, Advanced Economies and Emerging Markets.....	21

FIGURES

1. Primary Balance for Defaulting Countries.....	23
2. Primary Fiscal Balance for High-Debt Advanced Economies Where a Primary Deficit Was Brought to Zero.....	24
3. EMBI Spreads, 1994–2010.....	25

APPENDICES

1. How Often Are High Sovereign Bond Spreads Episodes Followed by Defaults? The Experience of Emerging Markets.....	12
2. Derivation of Real Interest Bill.....	13
3. Government Debt Structures—Advanced versus Emerging Economies.....	15

INTRODUCTION

The state of the public finances has worsened substantially in the main advanced economies as a result of the 2008–09 global financial and economic crisis. For some “peripheral” European countries, market participants and some commentators occasionally seem to believe that default (here intended as some form of debt restructuring) will sooner or later inevitably occur. Concerns about fiscal solvency in those countries have been reflected in financial market pressures, large default risk premiums on sovereign bonds, and downgrades by rating agencies. At the time of writing (late August 2010), credit default swap spreads are about 900 basis points in Greece and 300 basis points in Ireland and Portugal. In general, volatility remains high and every auction of government paper—especially in Europe, including in the largest countries—is closely monitored to discern possible triggers of abrupt market reactions.

In our view, the risk of debt restructuring is currently significantly overestimated. Although it is generally wise to assume that market developments reflect economic fundamentals, market overreaction does occur from time to time, with adverse implications for countries’ borrowing costs and debt dynamics. For example, considering data on sovereign bond spreads over the past decades, markets sounded false alarms in the vast majority of episodes—see Appendix 1. To place recent sovereign bond market developments in context, the present note reviews macro-fiscal factors underlying government debt dynamics in the top ten advanced economies ranked by needed fiscal adjustment in the illustrative scenario presented in the May 2010 *Fiscal Monitor* (IMF, 2010): France, Greece, Ireland, Italy, Japan, Netherlands, Portugal, Spain, United Kingdom, and United States.¹

This note summarizes the main arguments put forward by some market commentators who argue that default is inevitable, and presents a rebuttal for each argument in turn. Their main arguments focus on the size of the adjustment and continued market concerns reflected in government bond spreads. The essence of our reasoning is that the challenge stems mainly from the advanced economies’ large primary deficits, not from a high average interest rate on debt. Thus, default would not significantly reduce the need for major fiscal adjustment. In contrast, the economies that defaulted in recent decades did so primarily as a result of high debt servicing costs, often in the context of major external shocks. We conclude that default would not be in the interest of the citizens of the countries in question. Fiscal adjustment supported by reforms that enhance economic growth is a more effective response.

¹ See *Fiscal Monitor*, Figure 13.II (using country-specific interest rates–growth differentials). The list is almost identical on the basis of Ostry and others’ (2010) analysis of “fiscal space” (defined as the difference between current and estimated maximum sustainable level of debt).

ARGUMENTS AND REBUTTALS

Argument 1: “Default cannot be avoided because the needed fiscal adjustment is just too large.”

The needed fiscal adjustment in advanced economies is indeed very large. Fiscal solvency requires at least stabilizing the debt-to-GDP ratio. Such stabilization would involve improving the average cyclically adjusted primary balance from a deficit equivalent to 5.3 percent of GDP in 2010 to a surplus of 1.0 percent of GDP.² The required adjustment to stabilize the debt-to-GDP ratio for the ten advanced economies in our sample is summarized in Table 1.³

However, fiscal adjustment on the requisite scale is historically not unprecedented. During the past three decades, there were 14 episodes in advanced economies and 26 in emerging economies when individual countries adjusted their structural primary balance by more than 7 percentage points of GDP.⁴ Several economies were also able to sustain large primary surpluses for five or more years afterwards, though the record is more mixed in this regard (Abbas and others, 2010). Admittedly, this will be the first time that most advanced economies have to adjust simultaneously by such large amounts, implying a nontrivial drag on global economic growth (an issue analyzed in the forthcoming *World Economic Outlook*, October 2010). This said, large fiscal adjustments occurred simultaneously in more than half of the advanced European economies in the mid-1990s, especially in the run-up to the European Monetary Union. The bottom line: judging from past experience, such a major adjustment will no doubt be difficult, but is possible.

More significantly, when the starting position is a primary fiscal deficit, default often triggers major fiscal adjustment, as countries are forced to move abruptly into a primary surplus in the aftermath of a default. When a country defaults, it is often shut out from borrowing—especially on international markets. (Estimated periods of exclusion range widely, from one to several years—see, for example, Gelos, Sahay, and Sandleris, 2004; and Sturzenegger and

² The projected output gap series and thus the cyclical adjustment are premised on a permanent loss of output as a result of the crisis. Should this assumption turn out to be too pessimistic, the adjustment need would be lower. In addition, in a few countries, government spending on items such as civil service wages rose rapidly in recent years; to the extent that such increases can be reversed, fiscal adjustment would be easier.

³ More ambitious, medium-term fiscal adjustment targeting a gradual decline in the debt-to-GDP ratio would bring greater economic benefits over the long run in most advanced economies in our sample—see the May 2010 *Fiscal Monitor* (IMF, 2010).

⁴ The list includes (end date of the episode in parentheses): Belgium (1998), Canada (1999), Cyprus (2007), Denmark (1986), Finland (2000), Greece (1995), Ireland (1989), Israel (1983), Italy (1993), Japan (1990), Portugal (1985), Sweden (1987; 2000), United Kingdom (2000).

Zettelmeyer, 2006). As defaults are usually partial, a defaulting country needs to run a primary surplus in order to finance the payment on the interest bill of the restructured debt (and any debt not affected by the restructuring). Indeed, the median primary surplus during the three years after default was about 2 percent of GDP in the sample consisting of all economies that defaulted since 1976, subject to data availability (Figure 1).⁵

In today's advanced economies, the main issue is the primary deficit rather than the interest bill. The median primary deficit amounts to 7.4 percent of GDP in 2009–10 in our sample, compared with a median real interest bill of 2.3 percent of GDP (Table 2). In contrast, for the countries that defaulted over the past two decades, the median primary deficit amounted to 0.4 percent of GDP, compared with a real interest bill of 3.2 percent of GDP in the two years that preceded default.⁶ Thus, the problem of defaulters is typically a high interest burden, which is not the case for advanced economies today.

As a result, the needed adjustment in today's advanced economies would not be much affected by debt restructuring, even with a sizable haircut. To be concrete, let us consider by how much the primary adjustment needed to stabilize the debt-to-GDP ratio could be reduced by applying a 50 percent haircut—exceptionally large by historical standards. The haircut would make a limited difference for the required primary fiscal balance adjustment: 0.5 percentage point of GDP on average, and 2.7 percentage points for Greece (Table 1).⁷ In percent of the adjustment in the absence of haircut, the reduction in the needed adjustment would be less than one-tenth on average and less than one-fifth in the case of Greece. Of course, it could be argued that debt restructuring not only allows a decline in the primary surplus needed to stabilize public debt, but also makes it easier to stabilize debt at a lower

⁵ The list of defaults is drawn from Sturzenegger and Zettelmeyer (2006), who include debt restructurings and rescheduling in distressed circumstances, involving external creditors, and exclude payment delays and technical defaults that were eventually resolved with full repayment.

⁶ As is well known, the nominal interest bill can be converted into the real interest bill through two adjustments (see Appendix 2): (i) the addition of a “capital loss” term reflecting the increased domestic currency value of the foreign currency-denominated debt; and (ii) the subtraction of an “inflation correction” term reflecting the inflation erosion of the value of the debt in real terms. These adjustments are important for the emerging economy defaulters, which had sizable inflation and nominal depreciation, whereas they are largely irrelevant for the advanced economies today (with inflation almost nil, and essentially no foreign currency debt in the advanced economies). As shown in the table, the nominal interest bill in the advanced economies is also lower than in the emerging defaulters sample, though the difference is somewhat less pronounced.

⁷ The debt-stabilizing primary balance approximately equals the interest–growth differential times the debt ratio. For many countries in the sample, the differential is close to zero, implying that a small primary surplus would be sufficient to stabilize the debt ratio, and consequently the impact of a potential haircut is limited. The somewhat more significant impact of a hypothetical haircut in the case of Greece reflects the combination of a large interest–growth differential and high debt ratio. Approximately, multiplying a post-haircut debt-to-GDP ratio of 74 percent by an interest–growth differential of 3.8 percent gives a reduction in needed adjustment of 2.7 percentage points of GDP.

level. However, debt tolerance is likely to be much lower after a country has defaulted than it was prior to its repayment difficulties.⁸ In other words, living with a lower debt ratio as a result of default may not be very attractive, as default makes it much more difficult for a country to persuade investors to hold its liabilities.⁹

In our view, an alternative approach often referred to by market commentators as “investor-friendly” restructuring would not fundamentally alter this balance of costs and benefits. A nonconfrontational (or “preemptive,” or “voluntary”) restructuring would probably carry lower reputational costs for the borrower, but would also involve a smaller haircut (in a context where market concerns are focused on solvency, rather than liquidity), thus providing limited relief in terms of debt sustainability and, therefore, less relief in fiscal adjustment need. To the extent that this approach were hypothetically combined with official support, including from international institutions, it would not be necessary to move abruptly to a primary surplus; but the “smoothing” role of official support is already at play, for example, in Greece, in the absence of default.

Argument 2. “Default cannot be avoided because high interest rates make the burden of debt unsustainable.”

For countries currently experiencing market pressures, marginal rates of interest are high, but average interest rates on the stock of government debt remain relatively low (as already implicit in the discussion above). The reason for this is that maturity of government debt for the advanced economies in our sample is relatively long (seven years on average—Table 3) and debt structures are generally more resilient to abrupt changes in market perceptions than was the case for emerging economy defaulters of the past. In particular, the share of long term, nonindexed, domestic currency debt is higher in the advanced economies (see Appendix 3). Thus, even the countries with high spreads still have considerable time to convince the markets before their total government interest bill becomes too high. And, as shown in Table 3, refinancing needs are not significantly greater in small European peripherals than in the large advanced economies. Moreover, in the case of Greece, there is essentially no need to go back to the markets for the duration of the program supported by

⁸ Empirical evidence suggests that a country’s ability to sustain a given level of indebtedness is adversely affected by a history of failing to meet its debt obligations. This “debt intolerance” is evident in the extreme duress many emerging economies experience at government debt levels that would seem quite manageable by the standards of the advanced economies (Reinhart and others, 2003).

⁹ Borrowing costs are higher by an estimated 50–100 basis points for countries after they default, with the effect persisting for several years (Sturzenegger and Zettelmeyer, 2006). A seldom emphasized corollary is that defaulters pay higher interest rates even after their debt levels have been reduced. To avoid further increases in interest rates, these countries thus need to stabilize their debt-to-GDP ratio at a lower level than they experienced prior to default.

the IMF and the European Union. The European Financial Stability Facility could also be activated for other countries in the event this proved necessary.

Real interest rates in today's advanced economies are lower than for the economies that defaulted over the past two decades. The median real interest rates (implied by the overall interest bill) projected over the next two years amount to 2.5 percent for the advanced economies in the sample, with a maximum of 4.0 percent for Greece (Table 4). This is lower than for most of the emerging economies in our sample during the two years prior to default (the median for these countries is 5.4 percent).¹⁰ In drawing the comparison, it is important to take into account that, for some past defaulters, the bulk of the external debt was owed to official creditors, largely on concessional terms (e.g., Moldova and Pakistan are IDA-eligible).

Moreover, the projected interest–growth differential is substantially lower for the advanced economies today than it was for the economies that defaulted over the past two decades. Under current WEO projections, the median interest–growth differential for the ten advanced economies in our sample is forecast at 0.8 percent over 2011–12, with a maximum of 4.4 percent for Greece (in that case, largely on account of weak growth prospects—see below).¹¹ Even for Greece, the projected differential is lower than for most defaulters in the two years prior to default (a median of 7.3 percent).

Argument 3. “Once primary balance has been attained, it makes sense to default.”

A variant of the “fiscal adjustment is too large” argument posits that highly indebted countries will default as soon as they have attained primary balance. The purported rationale usually goes as follows: when the starting point is a large primary deficit, default may be too difficult because it would force an abrupt adjustment to primary balance (or, more accurately, a reasonably sized primary surplus—see below); but when primary balance has been attained, default looks appealing because it eliminates the interest bill with no need for further adjustment. As noted, short of a full default, countries will have to continue to run primary surpluses, even after a debt restructuring. In any case, the historical record shows that countries will usually make great efforts to avoid defaulting, casting doubt on the notion that, having achieved primary balance, they would choose to default in the absence of refinancing crises. Considering the universe of advanced economies with government debts above 60 percent (indeed well above this threshold in most cases) that reduced their primary

¹⁰ Of course, there is substantial variation within the emerging economies sample with respect to real interest rate levels and the factors underlying them. For example, in countries such as Indonesia and Uruguay, a major contributing factor to the real interest rate was the capital loss on the external debt stock due to nominal depreciation (prior to default), only partially compensated by the correction for inflation. Indeed, in those cases the default was largely triggered by the devaluation which in turn reflected external factors (including debt crises in Russia and Argentina, respectively).

deficits to zero at some point during the past twenty years (eight countries—Austria, 1997; Belgium, 1984; Greece, 1994; Ireland, 1984; Italy, 1991; Japan, 1981; Portugal, 1986; Sweden, 1996) finds no instance of default. Indeed, all advanced countries in this group improved the primary balance further to considerable surpluses (Figure 2). Casting the net wider to capture the emerging markets, too, it turns out that practically all defaults occur against the background of debt sustainability issues (to varying degrees) but are triggered by refinancing problems, often accompanied by large external shocks.

Argument 4. “Default cannot be avoided in the countries with an overvalued exchange rate because the needed real depreciation would further raise the public debt ratio, making it even less sustainable”

Real exchange rate overvaluation is especially relevant for a few euro member countries. Recent IMF staff reports noted some overvaluation for Greece (20–30 percent), Portugal and, to a lesser extent, Spain. Although structural reforms underway seek to improve not only wage flexibility but also non-cost competitiveness, the overvaluation remains nontrivial.

However, for members of currency areas the reversal of overvaluation—which requires internal deflation—has different implications for the debt-to-GDP ratio than for other countries where the adjustment typically occurs through nominal exchange rate depreciation. Emerging economy defaulters were hit by major increases in the debt ratio as a result of their currencies’ nominal depreciations associated with their crises. In euro area countries, a real depreciation would have to be attained through internal deflation and, through that channel, would also imply an increase in the debt-to-GDP ratio. However, the real depreciation would not be as abrupt as in emerging economy crises, nor would it be as large, because the process would not involve the overshooting that is often associated with nominal exchange rate depreciations.¹² Of course, a hypothetical exit from the euro area—a scenario that we see as extremely unlikely—would result in an abrupt devaluation and a consequent jump in the debt-to-GDP ratio. Even under that scenario, which would bring massive disruption and costs of its own, a default would not obviate the need for major fiscal adjustment, for the same reasons as presented above.

¹¹ While there is still considerable uncertainty regarding the future path of economic growth and interest rates, WEO forecasts for the countries in our sample are very close to *Consensus Forecasts*.

¹² Although internal devaluation could be a more difficult process, reforms of factor, product, and service markets can contribute to downward flexibility of prices and wages, to assist real exchange rate adjustment. These are policy objectives in several European peripherals. Spain has made significant progress in this regard in recent years. And Ireland’s recent experience suggests that it is possible to restore competitiveness and economic growth relatively quickly. Ireland faced a significant competitiveness disadvantage in 2009, but its real effective exchange rate is currently viewed broadly in line with medium-term fundamentals (IMF Country Reports 09/195 and 10/209). This improvement was associated with a deep recession, but Ireland has recently returned to relatively rapid growth.

Argument 5. “Politically it is easier to default than to adjust, because it is easier to ‘soak’ the rich and the foreigners than to face demonstrations by the lower and middle classes.”

The share of government debt held by domestic residents is typically higher in advanced economies, especially large ones, than in emerging economies. Nevertheless, there is significant variation across advanced economies in this respect. For some smaller European peripherals, the share of government debt held by nonresidents has risen significantly in recent years. In the case of Greece, for example, a sizable share is now held by banks from other euro area countries. This underlies arguments favoring “burden-sharing” with foreign creditors, which some suggest would render fiscal adjustment politically more palatable at home. Nevertheless, in all these countries (including Greece) debt holdings are also widespread among the middle and lower-middle class, and domestic banks. Moreover, in light of the high degree of financial integration, particularly within the euro area, default affecting foreign banks would eventually reverberate back to the domestic banking system and the domestic economy as a whole. Altogether, the domestic political and economic costs of a default could well be greater than those stemming from fiscal adjustment. This said, in designing fiscal adjustment, it is crucial to protect the vulnerable not only because it is the right thing to do but also because it preserves the political sustainability of the process.

Argument 6. “Default cannot be avoided because fiscal adjustment will depress growth.”

The required fiscal consolidation for many countries may well impose a drag on growth, but default won’t make the pain less severe because the size of the needed adjustment won’t be substantially smaller (see above). IMF staff has argued that, consistent with projections in the IMF *World Economic Outlook* (WEO), a fiscal adjustment of about 1 percentage point per year on average for the advanced economies balances the need for adjustment with concerns that too rapid fiscal consolidation would undermine the recovery, and that it would be crucial to support such adjustment by appropriate structural reforms (Blanchard and Cottarelli, 2010). In highly indebted countries experiencing large risk premiums, the speed and extent of fiscal adjustment is greater and, partly as a result, growth prospects are weaker, often leading to concerns about the possibility of vicious spirals of deflation and negative growth. However, a potential debt restructuring now would not undo the large and rapid fiscal contraction that has already been undertaken in some of these countries (notably, Greece). Furthermore, (a given amount of) fiscal adjustment in countries facing a higher perceived risk of sovereign default tends to be less contractionary (though still contractionary).¹³ In fact, fiscal consolidation reduces the likelihood of crisis scenarios; moreover, with diminished

¹³ It does not seem likely, at the current juncture, that the highly indebted European peripherals would experience “expansionary fiscal contractions.” (See Giavazzi and Pagano, 1990, for the seminal paper on this topic.) See forthcoming *World Economic Outlook*, October 2010, for evidence that the impact of fiscal adjustment on economic growth, while negative, is smaller for highly indebted countries.

uncertainty and lower risk premiums on private borrowing, there would be fewer incentives for economic agents to postpone investment and consumption.

Restructuring debt in today's advanced economies would also be detrimental to economic growth, and would not address the fundamental causes of weak growth. In the near term, the effects of a hypothetical debt restructuring on some sectors of the economy (in particular the banking system) would have severe consequences for growth. More important, a restructuring would be no substitute for, and would probably end up as a distraction from, the fiscal and structural reforms that are truly necessary for a durable increase in economic growth.

CONCLUSION

Although the fiscal fundamentals look challenging, current market indicators of default risk seem to reflect some market overreaction. The key considerations are the following:

- The needed fiscal adjustment is difficult, but has been attained before.
- Default would not reduce the need for adjustment by much, because primary deficits, not the interest bill, are the problem in advanced economies today.
- Although marginal interest rates are now high for Greece and, to a lesser extent, other European peripherals, average interest rates remain relatively low, giving time for fiscal adjustment to convince markets.
- Countries do not strategically decide to default but do so in the midst of refinancing crises: in the past, advanced economies that reduced primary deficits and reached primary balance or a small primary surplus subsequently persevered with the adjustment.
- The political and economic costs stemming from a hypothetical default would not be lower than those incurred under a strategy based solely on fiscal adjustment.
- Reforms are needed to improve potential growth and external competitiveness, thereby easing the fiscal adjustment process.

Appendix 1: How Often Are High Sovereign Bond Spreads Episodes Followed by Defaults? The Experience of Emerging Markets

This appendix reviews developments in sovereign bond spreads for emerging economies since the early 1990s. It asks how many episodes in which spreads rose above 1,000 basis points were followed by defaults, and how many turned out to be “false alarms,” with the situation stabilizing and the spreads eventually returning to low levels.

Based on all available data on EMBIG sovereign bond spreads (31 emerging markets, from various dates for different countries beginning with the first Brady deals in 1991–92), there are 36 instances in which a country’s spreads rose above 1,000 basis points (if the threshold is crossed repeatedly during a two year period, only the first instance is recorded) (Table 5).¹⁴ Several of those instances are associated with widespread “contagion” from the Mexican (1994–95), Asian (1997–98), Russian (1998), and (for fewer countries) Argentine (2002) and Lehman (2008) crises (Figure 3). Of those instances, seven eventually resulted in default; in the remaining 29 cases, however, the spreads stayed high for a few months and eventually fell back well below 1,000 basis points, with no default.¹⁵ Of course, absence of default does not always mean smooth sailing: many of the countries experiencing high spreads required support from the international community, including large-scale IMF-supported programs. But the point here is that default was avoided in the majority of instances initially identified by markets as warranting bond spreads in excess of 1,000 basis points.

The list of prominent averted defaults includes, for example, Mexico (1994–95), Korea (1997), Brazil (1998–99 and 2002) and Turkey (2000–01). Brazil in 2002 provides the clearest illustration of default fighting. With high and growing debt ratios, political uncertainty, and a difficult international environment, sovereign bond spreads surpassed 2,000 basis points in the summer and fall of 2002. Yet, with fiscal effort, help from the international financial institutions, and the gradual establishment of a new policy track record, the spreads eventually fell below 500 basis points by late 2003 and declined further in later years.

¹⁴ Many studies have documented the extent to which sovereign bond spreads in the modern era move together across countries to a greater extent than expected on the basis of fundamentals (for example, Mauro and others, 2006).

¹⁵ Interestingly, no single country defaulted with EMBI spreads being below the 1,000 threshold (though EMBI data are available for only five countries in our sample before the default date—Argentina, 2002; Cote d’Ivoire, 2001; Ecuador, 1999; Russia, 1998; Uruguay, 2003).

Appendix 2. Derivation of Real Interest Bill

This technical appendix recalls two ways of accounting for the change in the debt-to-GDP ratio, the first in nominal terms and the second in real terms, to show how the nominal interest bill was converted into a real interest bill for the calculations reported in the text and Tables 2 and 4.

Definitions:

$$S_t \equiv \frac{\text{Units of local currency}}{\text{per 1 US\$}} \quad (\text{spot exchange rate at end of period})$$

$$\frac{S_t}{S_{t-1}} \equiv 1 + s_t \quad \text{therefore, } s_t \text{ is rate of nominal depreciation}$$

$$D_t \equiv D_t^d + S_t D_t^f \quad (\text{sum of domestic and foreign currency debt, all expressed in local currency terms together})$$

P_t : primary balance

L_t : (nominal) interest bill

$$d_t \equiv \frac{D_t}{Y_t} \quad p_t \equiv \frac{P_t}{Y_t} \quad d_t^f \equiv \frac{D_t^f S_t}{Y_t} \quad d_t^d \equiv \frac{D_t^d}{Y_t} \quad l_t \equiv \frac{L_t}{Y_t}$$

$$Y_t = Y_{t-1} (1 + \pi_t)(1 + g_t) \quad \pi_t: \text{domestic inflation} \\ g_t: \text{real growth (domestic currency terms)}$$

$$1 + \delta_t \equiv (1 + \pi_t)(1 + g_t) \quad \delta_t \text{ is nominal growth in domestic currency}$$

$$1 + i_t^d \equiv (1 + \pi_t)(1 + r_t^d) \quad i_t^d \text{ is nominal, } r_t^d \text{ real interest rate on domestic currency debt}$$

$$1 + i_t^f \equiv (1 + \pi_t^f)(1 + r_t^f) \quad i_t^f \text{ is nominal, } r_t^f \text{ real interest rate on foreign currency debt.}$$

$$\text{Set } \alpha \text{ as share of foreign currency debt in total debt: } d_t^d = (1 - \alpha)d_t \\ d_t^f = \alpha d_t$$

$$D_t = -P_t + D_{t-1}^d + D_{t-1}^f * S_t + L_t$$

$$L_t = i_t^d D_{t-1}^d + i_t^f * D_{t-1}^f * S_t$$

From this setup, the evolution of debt/GDP ratio can be decomposed in various ways:

Nominal Decomposition (closest to how the data are reported in standard accounts):

$$d_t - d_{t-1} = -p_t - \frac{\delta_t}{1 + \delta_t} * d_{t-1} + l_t + \alpha d_{t-1} \frac{s_t}{1 + \delta_t}$$

where:
$$l_t \equiv \left[\frac{i_t^d}{1 + \delta_t} * (1 - \alpha) + \frac{i_t^f(1+s_t)}{1 + \delta_t} * \alpha \right] d_{t-1}$$

Recalling that, $\frac{\delta_t}{1 + \delta_t} = \frac{g_t}{1 + g_t} + \frac{\pi_t}{1 + \delta_t}$, the real decomposition is as follows:

$$d_t - d_{t-1} = -p_t - \frac{g_t}{1 + g_t} * d_{t-1} - \underbrace{\left[\frac{\pi_t}{1 + \delta_t} * d_{t-1} + \alpha d_{t-1} \frac{s_t}{1 + \delta_t} + l_t \right]}_{\text{Real Interest Bill}}$$

In Table 2, we report the following terms (expressed as a share of GDP):

- (1) The primary balance: p_t
- (2) The nominal interest bill: l_t
- (3) The capital loss from the nominal depreciation: $\left[\alpha d_{t-1} \frac{s_t}{1 + \delta_t} \right]$
- (4) The inflation correction: $\left[\frac{\pi_t}{1 + \delta_t} * d_{t-1} \right]$
- (5) The real interest bill: (2)+(3)-(4)
- (6) The real growth contribution: $\left[\frac{g_t}{1 + g_t} * d_{t-1} \right]$

In Table 4 we report the following terms (expressed in percentage points):

- (1) The nominal interest rate: $\left[\frac{i_t^d}{1 + \delta_t} * (1 - \alpha) + \frac{i_t^f(1+s_t)}{1 + \delta_t} * \alpha \right]$
- (2) The capital loss rate: $\left[\alpha \frac{s_t}{1 + \delta_t} \right]$
- (3) The inflation correction rate: $\left[\frac{\pi_t}{1 + \delta_t} \right]$
- (4) The real interest rate: (1)+(2)-(3)
- (5) The real interest rate minus the real growth rate: (1)+(2)-(3) - $\left[\frac{g_t}{1 + g_t} \right]$

Appendix 3. Government Debt Structures—Advanced versus Emerging Economies

Differences in government debt structures make the advanced economies in the sample less crisis-prone than the emerging economies that defaulted in the past, and imply a slower transmission of worsening market perceptions into a higher debt servicing burden. This can be seen by considering jointly various aspects of debt structure (Table 6):

- ***Currency composition.*** Advanced economies' debt is almost entirely denominated in domestic currency, whereas the share of government debt denominated in or indexed to foreign currency stands at 42 percent in the emerging economies and amounted to 63 percent the year prior to default in the emerging economies that defaulted over the past couple of decades.
- ***Floating rate and indexed debt.*** Within domestic currency debt, advanced economies have a lower share of floating rate or indexed debt than do emerging economies. Other things equal, this tends to slow down the transmission of increases in marginal rates to average borrowing costs.
- ***Maturity structure.*** Emerging economies have fairly long average maturity on their foreign currency-denominated debt (some of which is from official creditors, often on concessional terms) and even their maturity structure on fixed-rate, domestic currency-denominated debt is only slightly shorter than for advanced economies. But vulnerabilities result from the combination of these maturity structures with high weights of foreign currency, floating rate, and indexed debt.

To sum up, the share of domestic currency, long-term, nonindexed, fixed-rate debt is larger in advanced economies than in emerging economies, implying that it takes longer for increases in marginal interest rates to feed through to average borrowing costs, and that risks from changes in the exchange rate and rollover risks are also lower for advanced economies than emerging economies.

Table 1. Advanced Economies: The State of Public Finances and Debt-Stabilizing Primary Balances
(In percent of GDP)

	IMF Staff Projections, 2010			Country-Specific i-g, 2011–2015 Average	Debt-Stabilizing PB	Debt-Stabilizing PB after 50% haircut
	Gross Debt	Primary Balance	Cyclically Adjusted PB			
France	84.2	-6.0	-4.6	-0.1	-0.1	0.0
Greece	115.1	-8.6	-10.0	3.8	5.5	2.8
Ireland	78.8	-10.0	-6.0	0.5	0.4	0.2
Italy	118.6	-0.8	0.9	1.4	1.7	0.8
Japan	227.1	-8.3	-6.5	-0.1	-0.1	-0.1
Netherlands	64.2	-4.1	-3.4	1.1	0.8	0.4
Portugal	86.6	-5.6	-4.1	1.8	1.7	0.8
Spain	66.9	-8.7	-5.8	1.7	1.3	0.7
United Kingdom	78.2	-8.8	-5.4	-0.9	-0.7	-0.4
United States	92.6	-9.2	-7.6	0.0	0.0	0.0
<i>Average</i>	101.2	-7.0	-5.3	0.9	1.0	0.5

Source: IMF desk economists' projections, and authors' estimates.

Notes: The data refer to the general government. Cyclically adjusted primary balances (CAPB) are reported in percent of nominal GDP. The debt-stabilizing primary balance is set to stabilize a country's 2012 gross debt ratio. Illustrative scenarios for Japan are based on its net debt. Data for Greece in the first three columns are with respect to 2009. For Portugal and Spain, the figures do not reflect additional deficit reduction plans announced May 10. For the United States, the CAPB excludes losses from financial sector support. Country-specific interest-growth differentials for 2011–15 are based on WEO projections. For the "haircut" scenario, the 2012 debt ratio is reduced by 50 percent and stabilized at this level.

Table 2. Decomposition of Debt Dynamics, Advanced Economies and Default Episodes
(In percent of GDP)

	Real Interest Bill					Real Growth Contribution (6)	Debt/GDP
	Primary Balance (1)	Nominal Interest Bill (2)	Capital Loss due to Nominal Devaluation (3)	Inflation Correction (4)	Total (Real Interest Bill) (5)=(2)+(3)+(4)		
Advanced Economies (Averages for 2009–10)							
France	-5.9	2.5	...	-0.4	2.1	0.2	80.8
Greece	-5.5	5.3	...	-2.1	3.3	2.2	106.9
Ireland	-10.0	2.4	...	1.3	3.8	2.2	71.7
Italy	-0.8	4.6	...	-2.0	2.7	2.3	117.2
Japan	-8.7	2.9	...	2.8	5.7	3.3	222.4
Netherlands	-3.6	2.4	...	-0.3	2.1	0.8	61.9
Portugal	-6.1	3.1	...	-0.7	2.4	0.8	81.9
Spain	-9.4	2.1	...	0.0	2.1	0.9	61.1
United Kingdom	-9.0	2.6	...	-1.2	1.3	0.9	73.2
United States	-10.0	2.7	...	-0.7	2.0	-0.4	87.9
Median	-7.4	2.6	...	-0.6	2.3	0.9	81.3
Emerging Economies (Averages for the two years prior to default)							
Argentina (2002)	-0.5	4.4	0.0	0.0	4.4	1.2	44.0
Ecuador (1999)	0.6	4.3	0.0	-1.3	3.0	-1.6	65.1
Indonesia (1999)	0.3	2.0	31.6	-10.5	23.1	1.9	35.0
Jamaica (2010)	0.9	9.4	7.6	-10.4	6.6	2.0	104.5
Mexico (1982)	-4.5	3.8	0.1	-4.1	-0.2	-1.7	21.4
Moldova (2002)	4.5	5.3	6.8	-14.6	-2.6	-3.7	93.9
Pakistan (1999)	-0.2	5.7	4.6	-6.9	3.4	-1.3	74.4
Russia (1998)	-9.9	5.0	3.7	-10.1	-1.4	0.5	44.2
Ukraine (1998)	-2.1	2.1	2.9	-4.0	1.0	0.8	30.6
Uruguay (2003)	-1.3	3.0	15.4	-4.0	14.3	2.9	49.7
Median	-0.4	4.3	4.1	-5.5	3.2	0.7	46.9

Sources: Estimates using data from IMF *World Economic Outlook*, April 2010, and Sturzenegger and Zettelmeyer (2006).

Notes: The default episodes (the year of default is reported in parenthesis next to the country name in the first column) include all emerging economies that defaulted after 1976 for which there is available data to compute the decomposition. See Appendix 2 for derivation of the decomposition of debt dynamics.

Table 3. Advanced Economies' Gross Financing Needs, 2010–2011
(In percent of GDP, unless otherwise specified)

	Average Maturity (years)	Maturing Debt (2010) - from FM	Residual Maturing Debt (2010) - as of July 2010	Maturing Debt (2011)	Deficit 2010	Deficit 2011	Gross Financing Needs 2010	Gross Financing Needs 2011
France	6.7	16.9	11.0	10.2	-8.0	-6.2	24.9	16.3
Greece	7.8	13.4	2.9	14.8	-8.1	-7.6	21.5	22.4
Ireland	7.0	7.7	2.0	5.3	-11.9	-11.2	19.6	16.5
Italy	6.9	21.2	11.8	14.4	-5.2	-4.4	26.4	18.8
Netherlands	5.7	13.6	10.0	9.9	-6.9	-6.2	20.5	16.1
Japan	5.5	54.2	33.4	31.5	-9.8	-9.2	64.0	40.7
Portugal	6.4	13.0	6.6	12.2	-7.7	-6.7	20.7	18.9
Spain	6.8	10.3	5.8	9.2	-9.3	-7.0	19.6	16.2
United Kingdom	13.3	8.6	4.6	4.3	-10.4	-8.4	19.0	12.7
United States	4.7	21.2	13.7	11.0	-10.7	-8.0	31.9	19.0
Average	7.1	18.0	10.2	12.3	-8.8	-7.5	26.8	19.8

Sources: *World Economic Outlook* and *Fiscal Monitor (FM)*, International Monetary Fund; and Bloomberg.

Notes: Gross Financing Needs are computed, for each year, as the sum of Maturing Debt and Deficit. Debt maturing in 2011 is estimated assuming that a share equal to $(1/\text{average maturity})$ of the new debt issued in the remainder of 2010 will mature in 2011.

Table 4. Nominal, Real Interest Rate, and Growth Differential
(In percentage points)

	Nominal Interest Rate (1)	Capital Loss Rate (2)	Inflation Correction Rate (3)	Real Interest Rate (4)=(1)+(2)+(3)	Real Interest minus Real Growth (5)
Advanced Economies (Averages for 2011–12)					
France	3.6	...	-1.6	2.0	0.1
Greece	4.9	...	-0.9	4.0	4.4
Ireland	4.3	...	-1.9	2.5	0.4
Italy	4.4	...	-1.8	2.5	1.2
Japan	1.4	...	1.0	2.4	0.4
Netherlands	3.9	...	-0.7	3.2	1.6
Portugal	4.4	...	-1.3	3.1	2.4
Spain	4.2	...	-1.0	3.2	2.1
United Kingdom	4.3	...	-2.1	2.2	-0.4
United States	3.6	...	-1.7	1.9	-0.5
Median	4.2	...	-1.4	2.5	0.8
Emerging Economies (Averages for the two years prior to default)					
Argentina (2002)	10.0	0.0	0.1	10.0	7.3
Ecuador (1999)	6.5	0.0	-1.8	4.8	7.2
Indonesia (1999)	5.7	90.3	-30.1	66.0	60.7
Jamaica (2010)	9.0	7.1	-10.1	6.1	4.2
Mexico (1982)	20.8	0.5	-19.2	2.0	9.9
Moldova (2002)	5.6	7.2	-15.6	-2.7	1.2
Pakistan (1999)	7.6	6.1	-9.3	4.5	6.3
Russia (1998)	13.2	7.3	-12.9	7.5	8.9
Ukraine (1998)	6.8	8.9	-13.4	2.3	-0.3
Uruguay (2003)	5.9	29.4	-7.9	27.4	21.8
Median	7.2	7.2	-11.5	5.4	7.3

Sources: Estimates using data from IMF *World Economic Outlook*, April 2010. For the foreign currency-denominated debt as a share of total, see FAD database on external debt and Sturzenegger and Zettelmeyer (2006).

Notes: The default episodes (the year of default is reported in parenthesis next to the country name in the first column) include all emerging economies that defaulted after 1976, subject to data availability. See Appendix 2 for derivation of the decomposition of debt dynamics.

Table 5. Episodes When Sovereign Bond Spreads Rose above 1,000 Basis Points, Emerging Economies

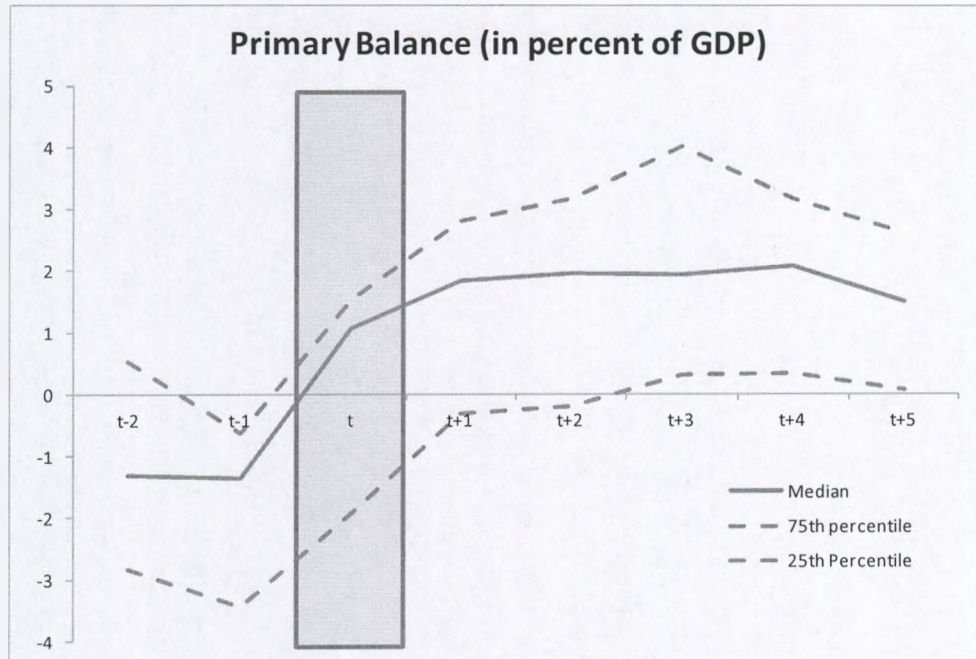
Instances in Which Sovereign Bond Spreads Crossed 1,000 Basis Points	Evolution of Spreads During the Following 2 Years	What Happened Next?	Defaulted?
Algeria (2000)	Declined	Went down below 300 in 2003.	
Argentina (1995)	Remained High	Declined and stabilized around 400, but crossed again 1000 after the Russian default.	
Argentina (1998)	Remained High	Declined slowly until it crossed again 1000 in March 2001.	
Argentina(2001)	Remained High	Defaulted in 2002.	Y
Brazil (1995)	Declined	Crossed again 1000 during the Russian default.	
Brazil (2002)	Remained High	Spreads remained high during Argentine default and started to go down in mid-2003.	
Bulgaria (1994)	Remained High	EMBI data started in 1994 above 1000 and remained high during Mexican peso crisis.	
Bulgaria (1999)	Declined	Stabilized around 200 after 2002.	
Colombia (1998)	Declined	Stabilized at about 700 by mid 1999. Crossed again 1000 during the Argentine default.	
Colombia (2002)	Declined	Stabilized around 250 from the summer of 2006 until the Lehman default.	
Cote d'Ivoire (1999)	Remained High	Defaulted in 2001.	Y
Croatia (1998)	Declined	Stabilized around 150.	
Dominican Rep (2004)	Remained High	Defaulted in 2005.	Y
Ecuador (1995)	Declined	EMBI data started in 1995 above 1000. Remained High during Mexican crisis. Declined until Russian default.	
Ecuador (1998)	Remained High	Defaulted in 1999.	Y
Ecuador (2004)	Declined	Crossed again 1000 after Lehman.	
Lebanon (2002)	Declined	Crossed again 1000 after Lehman.	
Malaysia (1998)	Declined	Stabilized around 200.	
Mexico (1996)	Declined	Up again during Russian default.	
Mexico (1998)	Declined	Stabilized around 200.	
Morocco (1998)	Declined	Stabilized below 100 until EMBI discontinued (11/2006).	
Nigeria (1994)	Remained High	Remained due to Mexican peso crisis.	
Nigeria (1996)	Declined	Up again during Russian default.	
Nigeria (2003)	Declined	Went down below 100 until EMBI was discontinued (4/2007).	
Pakistan (2001)	Declined	Crossed again 1000 in August 2008.	
Peru (1998)	Declined	Stabilized around 300.	
Poland (1995)	Declined	Stabilized around 200.	
Russia (1998)	Remained High	Defaulted in 1998.	Y
Russia (2001)	Declined	Stabilized around 300.	
Turkey (1998)	Declined	But went up again in February 2001.	
Turkey (2003)	Declined	Stabilized around 300.	
Ukraine (2000)	Remained High	Defaulted in 2000.	Y
Ukraine (2001)	Declined	Crossed again 1000 after Lehman.	
Uruguay (2003)	Remained High	Defaulted in 2003.	Y
Venezuela (1996)	Declined	Up again during Russian default.	
Venezuela (2003)	Declined	Crossed again 1000 after Lehman.	

Notes: This table reports instances in which the EMBI spreads for the country listed rose above 1,000 basis points (the year is given in brackets) and tracks what happened afterwards. For cases in which the 1,000 basis points threshold is crossed (from below and above) repeatedly within a two year period, only the first instance is noted.

Table 6. Debt Structure, Advanced Economies and Emerging Markets (in percent)

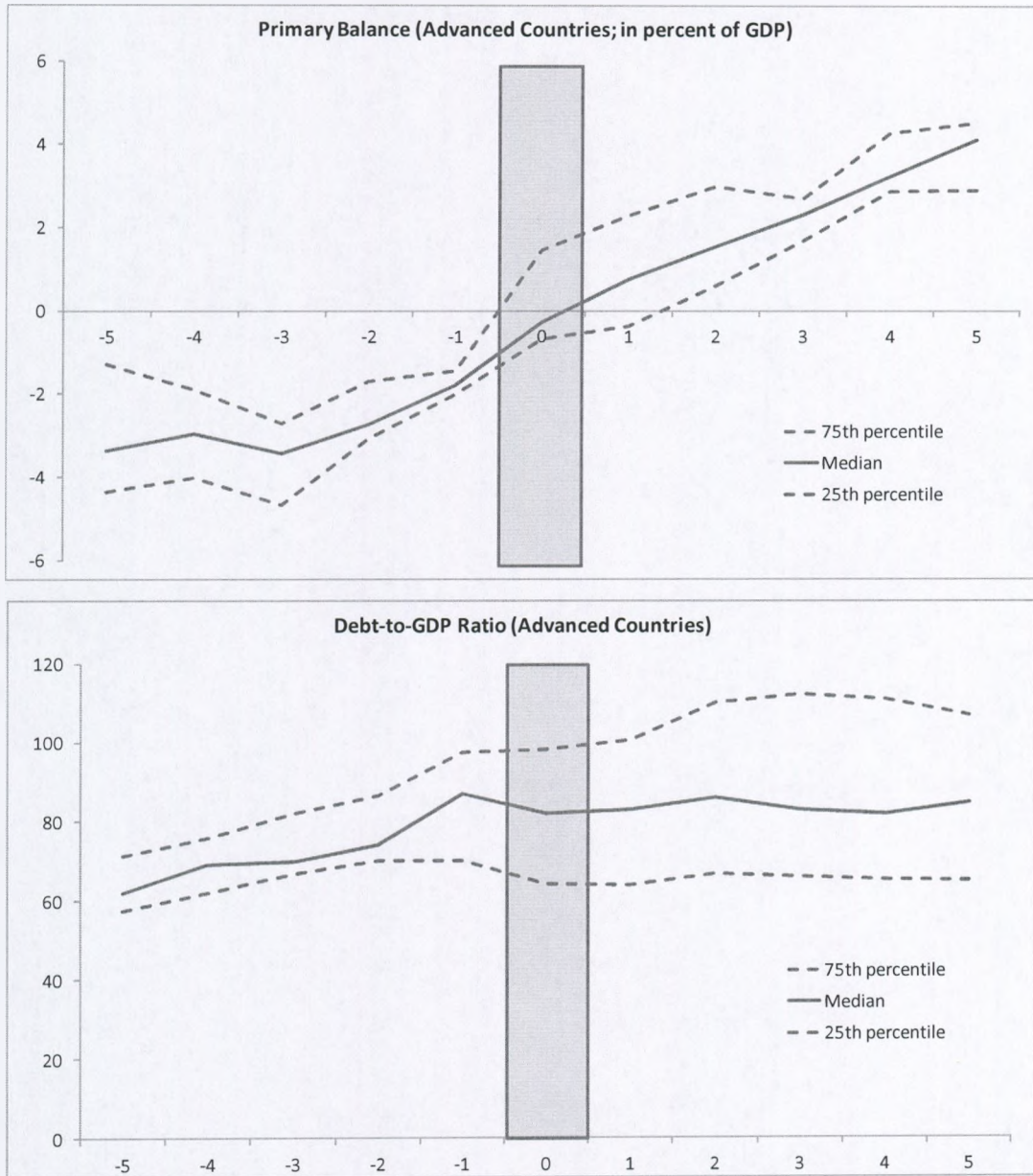
	Debt in Local Currency								Debt in Foreign Currency		
	Central Government Debt (% of GDP)	Local Currency share of Cent. Gov. Debt	Average Maturity of Debt in Local Currency	Variable Rate,		Short Term	of which:		Foreign Currency share of Cent. Gov. Debt	Short Term	Long Term
				Indexed and Others	Fixed Rate		Medium Term	Long Term			
<i>Advanced Economies (2009)</i>											
Japan	158.2	100	6.1	7	93	31	35	34	0	n.a.	n.a.
Greece	116.6	100	7.9	24	76	5	26	69	0	n.a.	n.a.
United States	48.5	100	4.4	8	92	41	34	24	0	n.a.	n.a.
Ireland	47.3	100	6.0	1	99	20	29	52	0	n.a.	n.a.
Spain	42.6	99	6.4	1	99	18	20	62	1	n.a.	n.a.
United Kingdom	55.5	100	14.1	21	79	10	27	64	0	n.a.	n.a.
France	57.0	100	6.7	12	88	21	21	58	0	n.a.	n.a.
Portugal	65.9	98	6.0	0	100	17	5	78	2	n.a.	n.a.
Netherlands	44.8	98	6.6	0	100	31	31	38	2	n.a.	n.a.
Italy	90.3	100	7.0	28	72	13	25	62	0	n.a.	n.a.
Average	72.7	99	7.1	10	90	21	25	54	1	n.a.	n.a.
<i>Emerging Economies (2005)</i>											
Argentina	51.8	28	n.a.	99	1	0	0	100	72	28	72
Brazil	67.9	81	n.a.	68	32	60	40	0	19	11	89
Chile	48.9	38	7.7	63	37	58	42	0	62	6	94
China	18.9	80	n.a.	0	100	5	43	52	20	52	48
Colombia	43.6	64	n.a.	40	60	9	40	51	36	16	84
Hungary	---	---	4.6	8	92	24	54	22	---	---	---
India	46.1	85	n.a.	9	91	3	49	48	15	7	93
Indonesia	47.3	47	n.a.	69	31	0	0	100	53	17	83
Israel	---	---	n.a.	83	17	0	30	70	---	---	---
Korea	---	---	3.9	0	100	0	72	28	---	---	---
Malaysia	54.3	70	n.a.	0	100	2	45	53	30	25	75
Mexico	26.2	51	6.4	36	64	36	43	21	49	4	96
Poland	43.6	74	4.9	12	88	9	86	5	26	25	75
Russia	17.0	23	n.a.	0	100	0	24	76	77	10	90
Thailand	31.3	73	n.a.	3	97	25	23	52	27	30	70
The Czech Republic	---	---	n.a.	0	100	16	84	0	---	---	---
The Philippines	75.5	52	n.a.	2	98	30	42	28	48	11	89
Turkey	49.0	71	2.0	54	46	6	83	11	29	0	99
Venezuela	32.5	33	n.a.	89	11	88	0	12	67	22	78
Average	43.6	58	4.9	33	67	20	42	38	42	18	82
<i>Default Cases (year prior to default)</i>											
Argentina (1981)	10.6	36	n.a.	3	97	94	0	6	64	39	61
Argentina (2001)	43.1	1	n.a.	100	0	0	0	100	99	14	86
Brazil (1982)	17.5	35	n.a.	0	100	19	81	0	65	19	81
Chile (1982)	26.2	14	n.a.	69	31	71	0	29	86	15	85
Indonesia (1998)	63.9	13	n.a.	100	0	---	---	---	87	19	81
Mexico (1981)	24.2	57	n.a.	6	94	9	0	91	43	32	68
Russia (1997)	44.2	41	n.a.	13	87	65	0	35	59	14	86
The Philippines (1982)	30.2	32	n.a.	16	84	22	23	55	68	50	50
Venezuela (1981)	15.0	100	n.a.	98	2	100	0	0	0	53	47
Average	30.5	37	n.a.	45	55	47	13	40	63	28	72

Sources and notes: For advanced economies, data is from the OECD Central Government Debt Yearbook (1980–2009) and relates to the total marketable debt. For emerging economies, data on local currency government debt is from the Guscina and Jeanne (2006) database; foreign currency government debt combines two series: (a) public and publicly guaranteed external debt as defined in the Global Development Finance database and (b) domestic government debt denominated in foreign currency from the Guscina and Jeanne (2006) database. The maturity structure of the foreign currency government debt assumes the same structure as the total foreign currency debt. For advanced economies, short-term fixed rate local currency debt includes money market instruments. For emerging markets, data on the composition of local currency debt is from the Guscina and Jeanne (2006) database. Average maturity for selected economies is from the OECD Central Government Debt Yearbook (1980–2009). Short-term refers to a maturity of less than 1 year; medium-term (1–5 years); and long-term (>5 years). Japan: 2008 values. Chile: 2003 values, includes central bank domestic debt. Turkey: 2009 values, debt/GDP defined by EU standards, and debt maturity corresponding to original maturity (Source: Undersecretariat of Treasury).

Figure 1. Primary Balance for Defaulting Countries

Notes: The sample consists of all default episodes since 1976, subject to data availability. The year t indicates the time of default.

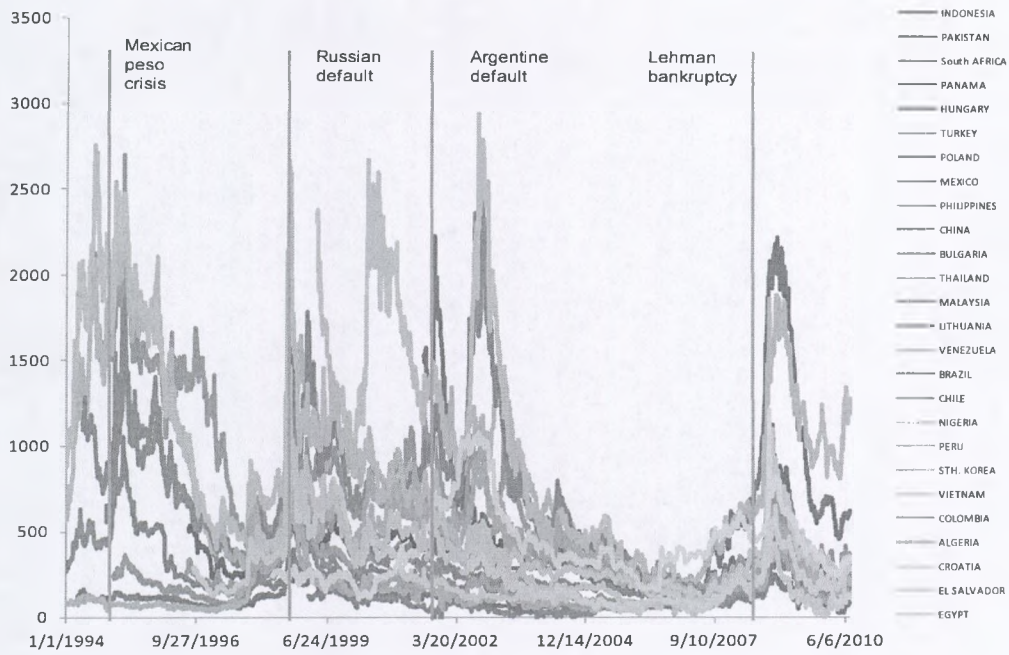
Figure 2. Primary Fiscal Balance for High-Debt Advanced Economies Where a Primary Deficit Was Brought to Zero



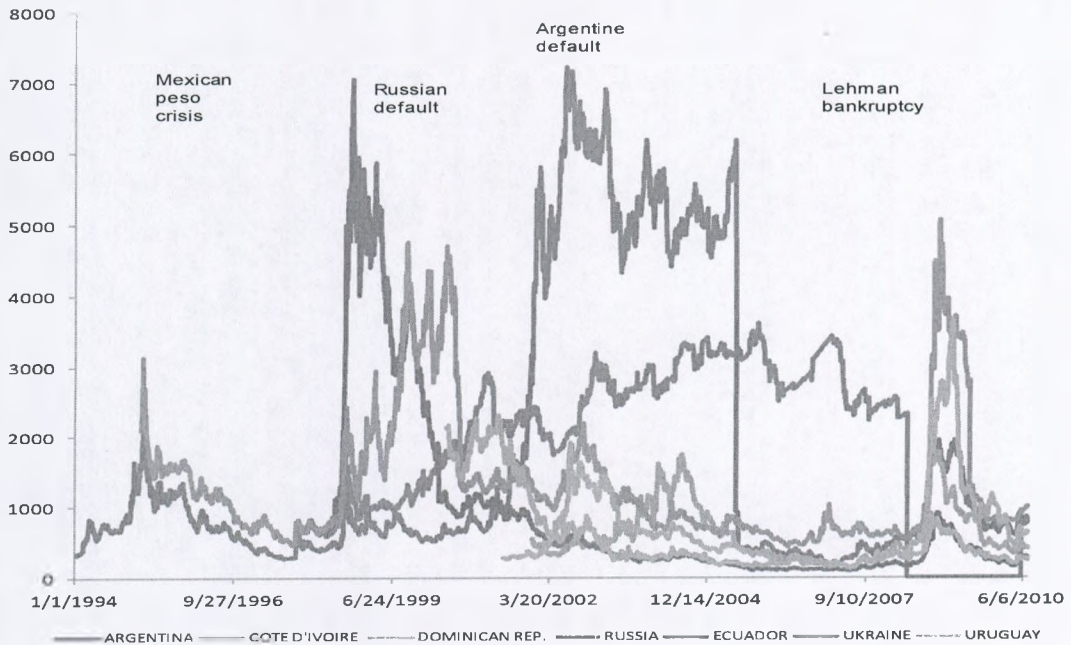
Notes: Eight countries with government debt of at least 60 percent of GDP reduced their primary deficits to attain primary balance during the sample period since 1980: Austria (1997), Belgium (1984), Greece (1994), Ireland (1984), Italy (1991), Japan (1981), Portugal (1986), Sweden (1996). Numbers in parentheses indicate the date when the primary balance is attained. On the horizontal axis, zero indicates the year when primary balance is reached.

Figure 3. EMBI Spreads, 1994–2010

Countries that did not default



Countries that defaulted



REFERENCES

Abbas, S.M. Ali, Olivier Basdevant, Stephanie Eble, Greetje Everaert, Jan Gottschalk, Fuad Hasanov, Junhyung Park, Cemile Sancak, Ricardo Velloso, and Mauricio Villafuerte, 2010, *Strategies for Fiscal Consolidation in the Post-Crisis World*, IMF Departmental Paper (Washington, International Monetary Fund).

Blanchard, Olivier, and Carlo Cottarelli, "Ten Commandments for Fiscal Adjustment in Advanced Economies," blog post on IMF Direct, June 24, <http://blog-imfdirect.imf.org/2010/06/24/ten-commandments-for-fiscal-adjustment-in-advanced-economies/>.

Gelos, Gaston R., Ratna Sahay, and Guido Sandleris, 2004, "Sovereign Borrowing by Developing Countries: What Determines Market Access?" IMF Working Paper No. 04/221 (Washington: International Monetary Fund).

Giavazzi, Francesco, and Marco Pagano, 1990, "Can Severe Fiscal Contractions Be Expansionary? Tales of Two Small European Countries," in *NBER Macroeconomics Annual*, Vol. 5, pp. 75–122 (Cambridge, Massachusetts: National Bureau of Economic Research).

IMF, 2010, *Fiscal Monitor: Navigating the Fiscal Challenges Ahead* (Washington: International Monetary Fund), May.

Mauro, Paolo, Nathan Sussman, and Yishay Yafeh, 2006, *Emerging Markets and Financial Globalization—Sovereign Bond Spreads in 1870–1913 and Today* (Cambridge: Oxford University Press).

Ostry, Jonathan D., Atish R. Ghosh, Jun Il Kim, and Mahvash S. Qureshi, 2010, "Fiscal Space," IMF Staff Position Note 10/11 (Washington: International Monetary Fund).

Reinhart, Carmen M., Kenneth S. Rogoff, and Miguel A. Savastano, 2003, "Debt Intolerance," *Brookings Papers on Economic Activity*, Vol. 1, Spring, pp. 1–74.

Sturzenegger, Federico, and Jeromin Zettelmeyer, 2006, *Debt Defaults and Lessons from a Decade of Crises* (Cambridge, Massachusetts: MIT Press).